

**GENERAL NOTES**

The Developer/Contractor/Builder is to ensure that the building under construction complies with the 2010 Building Regulations in respect of all trades involved in the construction of this development.

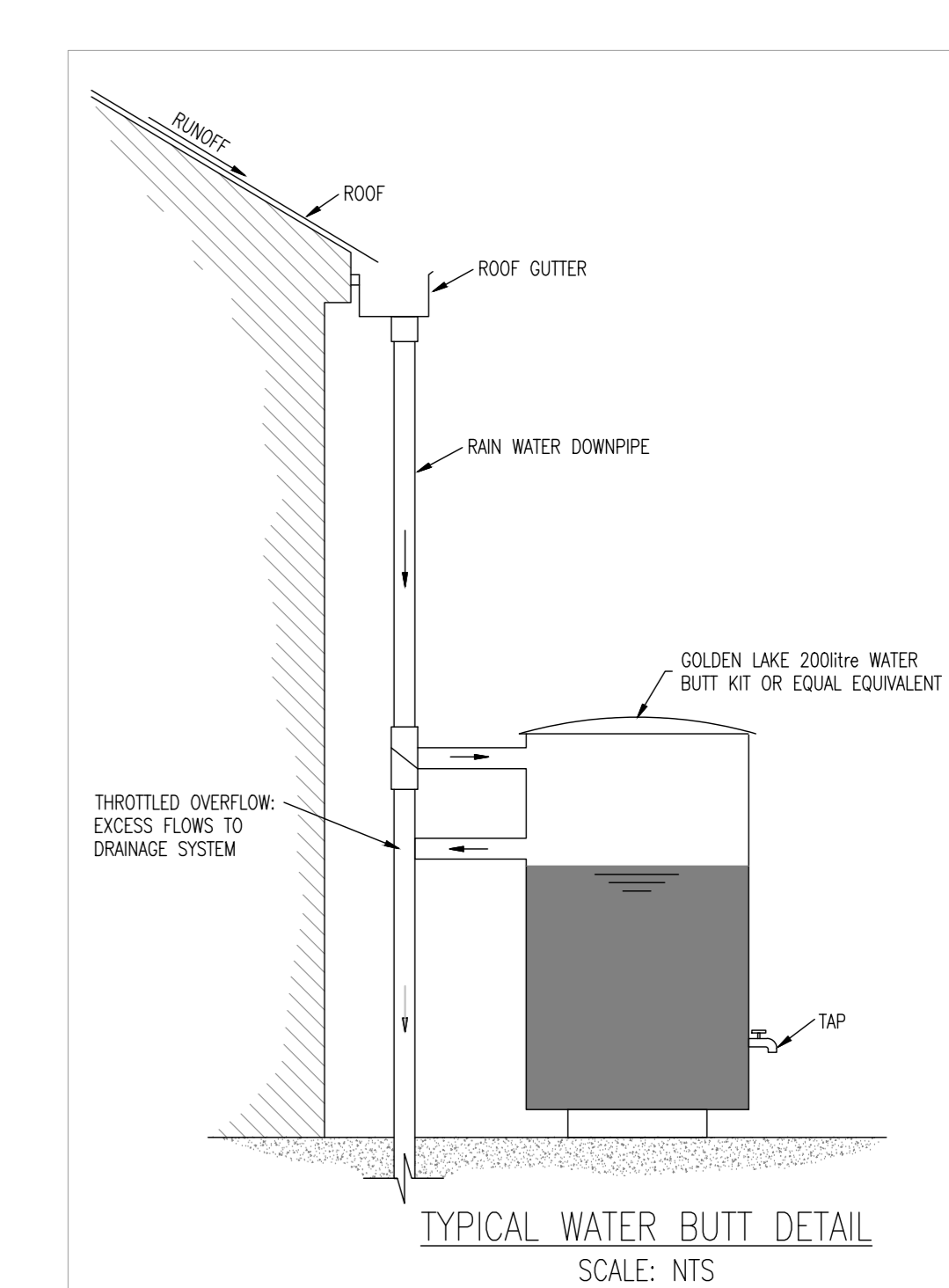
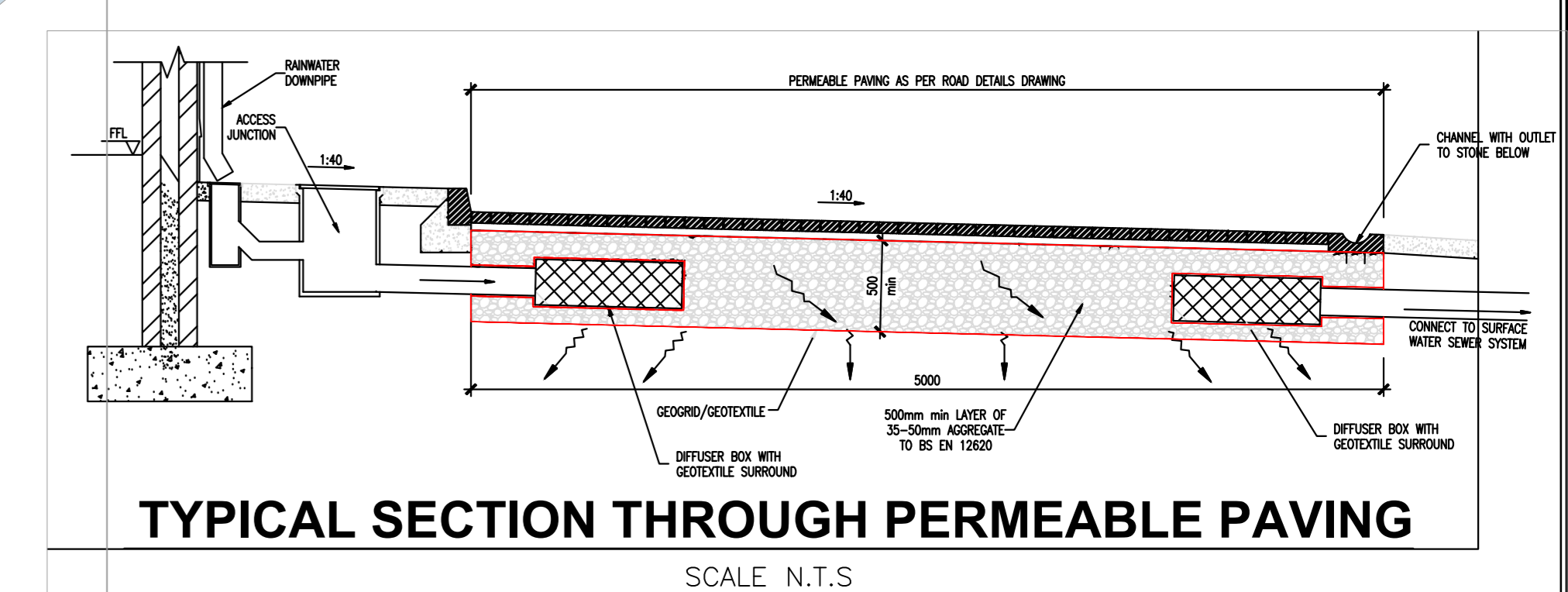
The Developer/Contractor/Builder should notify BCA of any intended deviations from these plans prior to commencement of development.

All Site Development works to be carried out in accordance with the recommendations for Site Development Works for Housing Areas' Dept. of Environment.

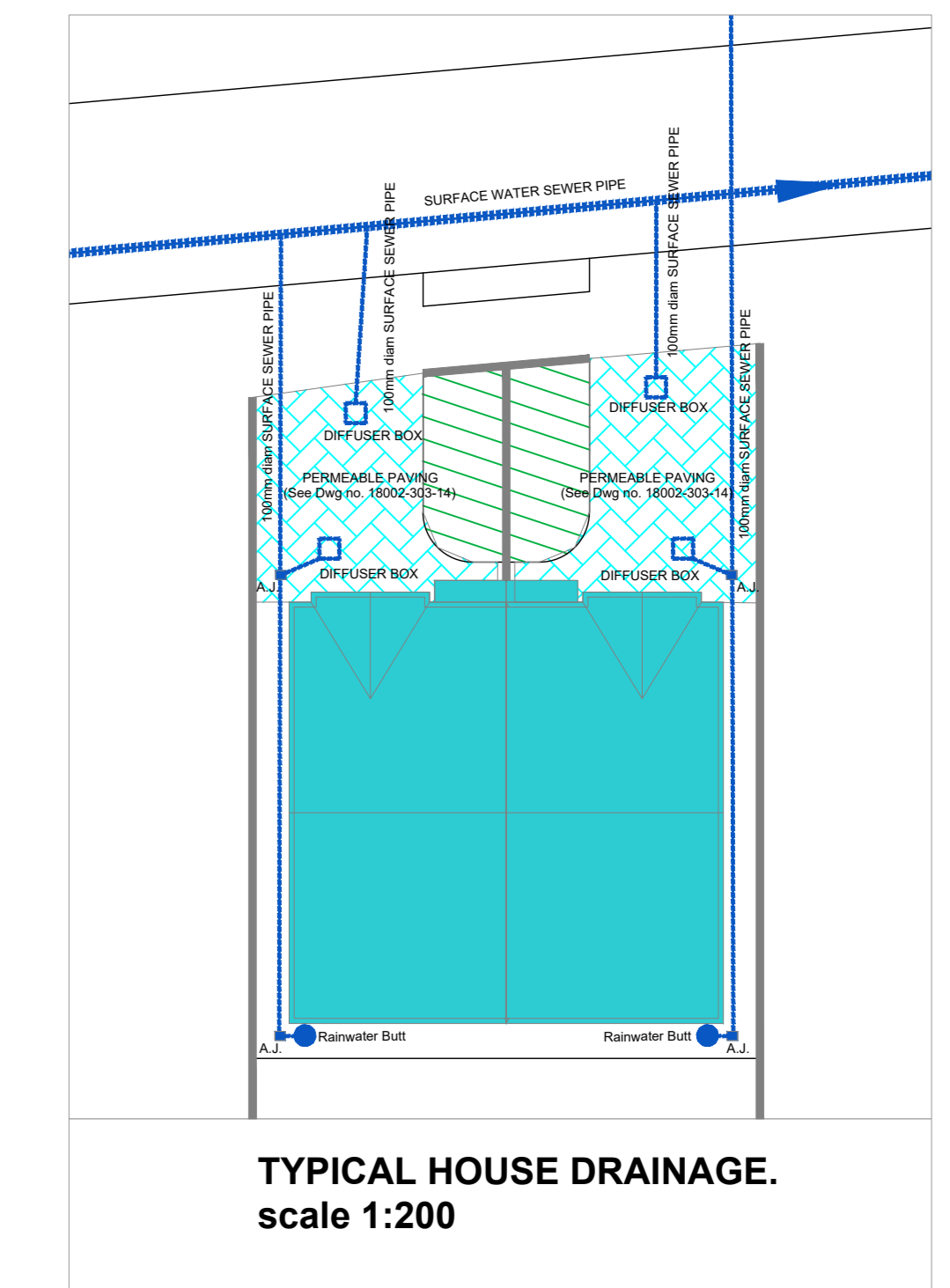
Contractors must verify all dimensions at the job before commencing any work. No working dimensions to be scaled. This drawing is for the purpose of planning only. Dimensions to blockwork only.

| Revision | Date | Rev. |
|----------|------|------|
|          |      |      |

31-01-19 - A - Revised to accommodate updated site  
 13-02-19 - B - Updated boundary treatments  
 25-08-19 - C - Revised blocks K, L, on-site & parking  
 27-09-19 - D - Attenuation tank position revised  
 09-10-19 - E - Services sheets updated



| SURFACE MANHOLE SCHEDULE |             |              |
|--------------------------|-------------|--------------|
| MH No.                   | Cover Level | Invert Level |
| S1.1                     | 65.85       | 64.99        |
| S1.2                     | 65.95       | 64.80        |
| S1.3                     | 66.10       | 64.69        |
| S1.4                     | 65.55       | 64.49        |
| S1.5                     | 65.45       | 64.43        |
| S1.6                     | 65.55       | 64.29        |
| S1.7                     | 65.85       | 64.23        |
| S1.8                     | 65.85       | 64.20        |
| S1.8a                    | 65.85       | 64.16        |
| S1.9                     | 65.50       | 64.12        |
| S1.10                    | 65.45       | 63.90        |
| S1.11                    | 65.60       | 63.78        |
| S1.12                    | 65.40       | 63.64        |
| S2.4                     | 66.10       | 65.19        |
| S2.5                     | 65.80       | 64.62        |
| S2.6                     | 65.70       | 64.66        |
| S3.5                     | 65.60       | 64.62        |
| S4.11                    | 66.35       | 65.17        |
| S4.12                    | 66.95       | 65.00        |
| S4.13                    | 66.75       | 64.77        |
| S4.14                    | 66.70       | 64.55        |
| S4.15                    | 66.45       | 64.46        |
| S4.16                    | 66.25       | 64.28        |
| S5.12                    | 66.25       | 65.21        |
| S6.13                    | 67.00       | 64.92        |
| S7.17                    | 66.40       | 64.67        |
| S7.18                    | 66.15       | 64.58        |
| S8.23                    | 66.95       | 65.03        |
| S8.24                    | 66.75       | 64.81        |
| S8.25                    | 66.80       | 64.49        |
| S8.26                    | 67.00       | 64.30        |
| S8.27                    | 67.25       | 63.98        |
| S8.28                    | 66.45       | 63.85        |
| S8.29                    | 66.60       | 63.29        |
| S8.30                    | 65.85       | 63.07        |
| S8.31                    | 65.20       | 63.00        |
| S9.27                    | 66.40       | 65.24        |
| S9.28                    | 66.60       | 65.07        |
| S9.29                    | 66.40       | 64.97        |
| S9.30                    | 66.65       | 64.80        |
| S9.31                    | 67.00       | 64.63        |
| S9.32                    | 67.20       | 64.47        |
| S10.28                   | 66.20       | 64.73        |
| S10.29                   | 66.35       | 64.55        |
| S10.30                   | 65.85       | 64.26        |
| S10.31                   | 66.15       | 63.36        |
| S11.33                   | 66.00       | 63.74        |
| S11.35                   | 66.10       | 63.70        |
| S11.36                   | 66.15       | 63.65        |
| S11.37                   | 66.35       | 63.61        |
| S11.34                   | 66.40       | 63.45        |
| S12.39                   | 67.50       | 65.79        |
| S12.40                   | 67.35       | 65.67        |
| S12.41                   | 67.00       | 65.33        |
| S12.42                   | 66.50       | 65.08        |
| S12.43                   | 66.30       | 64.57        |



See dwg 1800-303-14 for typical details

Client:  
Westar Investments Ltd.

Job:  
Clane KDA1 SHD

Location:  
Lands at Capdoe & Abbeylands, Clane, Co. Kildare

Drawing Title:  
SITE LAYOUT - SERVICES  
Surface Water

**bca** brian connolly associates  
CONSULTING ENGINEERS

BSc Eng. MSc. DIC. C.Eng. MEMI

The Studio, 'West's Way', Clane, Co. Kildare. T. 045 852111 F. 045 852103

e: bcassoc@eircom.net

Planning - SHD 02c

|                 |                |
|-----------------|----------------|
| job no          | 18002          |
| date            | 02.11.18       |
| scale           | 1:500 @ A0     |
| drawn by        | Brian Connolly |
| cad ref no      |                |
|                 | 300            |
| planning ref no |                |
| fire ref no     |                |
| drawing no.     | 303-10F        |

**SITE LAYOUT - SITE SERVICES LAYOUT: SURFACE WATER**  
Scale 1:500 @ A0